

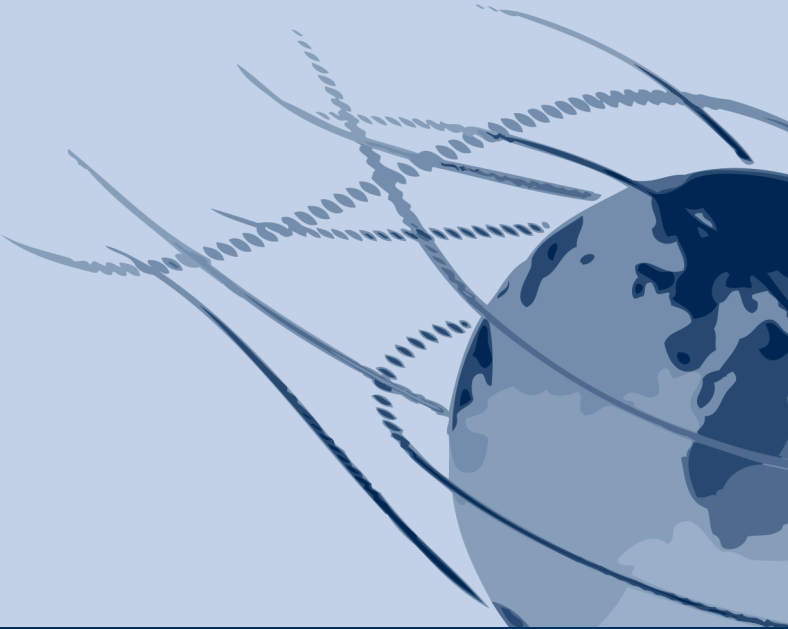
Reliance 4

LICENSE ACTIVATION



Reliance 4

LICENSE ACTIVATION



© 2011 GEOVAP, spol. s r.o. All rights reserved.

GEOVAP, spol. s r.o.
Cechovo nabrezi 1790
530 03 Pardubice
Czech Republic
+420 466 024 618
<http://www.geovap.cz>

Products that are referred to in this document may be trademarks and/or registered trademarks of the respective owners.

While every precaution has been taken in the preparation of this document, GEOVAP, spol. s r.o. assumes no responsibility for errors or omissions, or for damages resulting from the use of information contained in this document or from the use of programs and source code that may accompany it. In no event shall GEOVAP, spol. s r.o. be liable for any loss of profit or any other commercial damage caused or alleged to have been caused directly or indirectly by this document.

Table of Contents

1	Introduction	1
2	Activation requirements	2
3	Activation methods	3
4	Activation procedure steps	4
5	Time limited license	12
6	Additional information	13

1 Introduction

In order to be fully functional, each of the software modules making up **Reliance 4** requires a license. The license is stored in a so-called *license key*. There are two kinds of *license key*:

- **HW key**
- **SW key**

If you have purchased a license to be stored in a software key (i.e. the shipment does not contain a hardware key), you must first activate the license. Only after the activation, the system will be fully functional.

Note: If both hardware and software keys are present on a computer, only the license stored in the hardware key is considered (licenses are not merged in such case).

2 Activation requirements

1. A computer with **Reliance 4** installed (version 4. 0. 9 or later).
2. Serial number – it is shipped with a product.

If you wish to perform the activation through the website (the recommended method), you will need access to the *Members section* of the **Reliance** website (<http://www.reliance.cz/en/members-section>).

If you are not yet our customer, you will receive the login information to access the *Members section* along with the first shipment.

Warning:

A software key, which results from the activation process, is a special file containing license information and information about the computer it is dedicated for. As a result, a software key cannot be used on another computer (it is not portable between computers). Therefore, a license must be activated on the computer where **Reliance 4** will be operating!

3 Activation methods

1. Automatic method – this is the **recommended** method. **Reliance** system connects to the licence server and activates licence automatically. The method is available in version 4.1.1 and later.
2. Activation through the **Reliance** website – an activation key is generated via form in the members section.
3. Activation via e-mail – an activation key will be generated by the next working day at the latest. Please only use this activation method in exceptional cases.

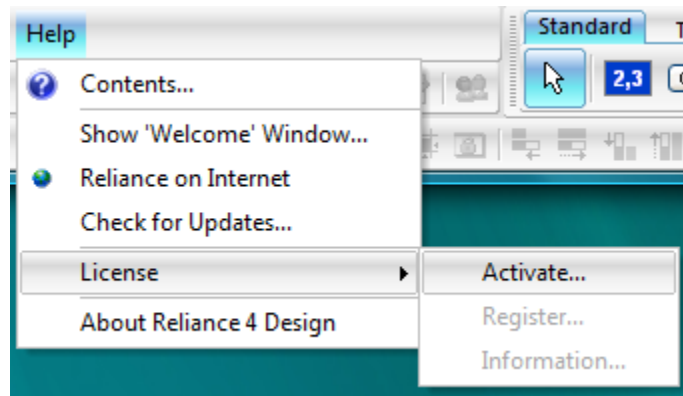
4 Activation procedure steps

Step 1:

On the computer where **Reliance 4** will be operating, launch the *Reliance 4 module* that the license is intended for (*Reliance 4 Design, Reliance 4 View, Reliance 4 Control* or *Reliance 4 Control Server*). If the license is intended for *Reliance 4 Server*, launch any other module (e.g. *Reliance 4 Control Server*).

Step 2:

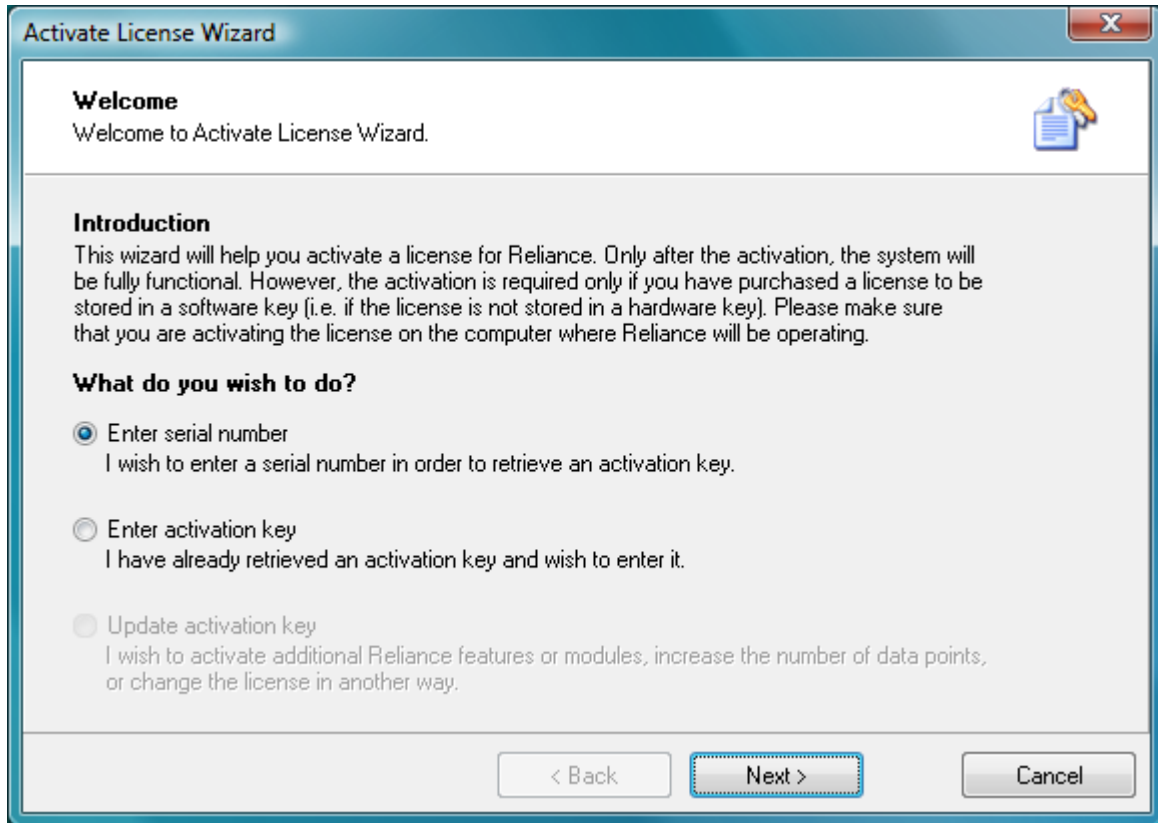
Open the *Activate License Wizard* by choosing the *Activate License* command in the *Help* menu.



Activate license

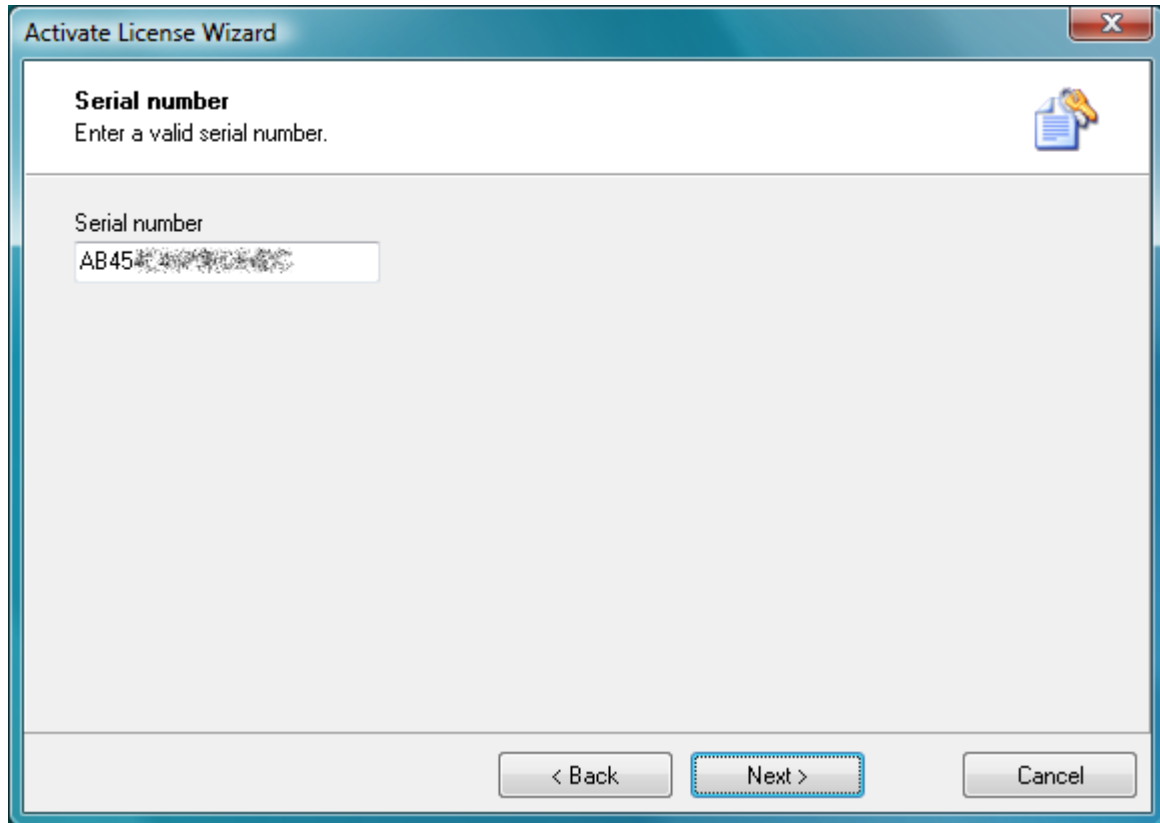
Step 3:

Choose the "Enter serial number" option and click the **Next** button.

**Activate License Wizard**

Step 4:

Enter the 16-digit serial number that you've received along with the shipment and click the **Next** button.



Activate License Wizard

Serial number
Enter a valid serial number.

Serial number
AB45

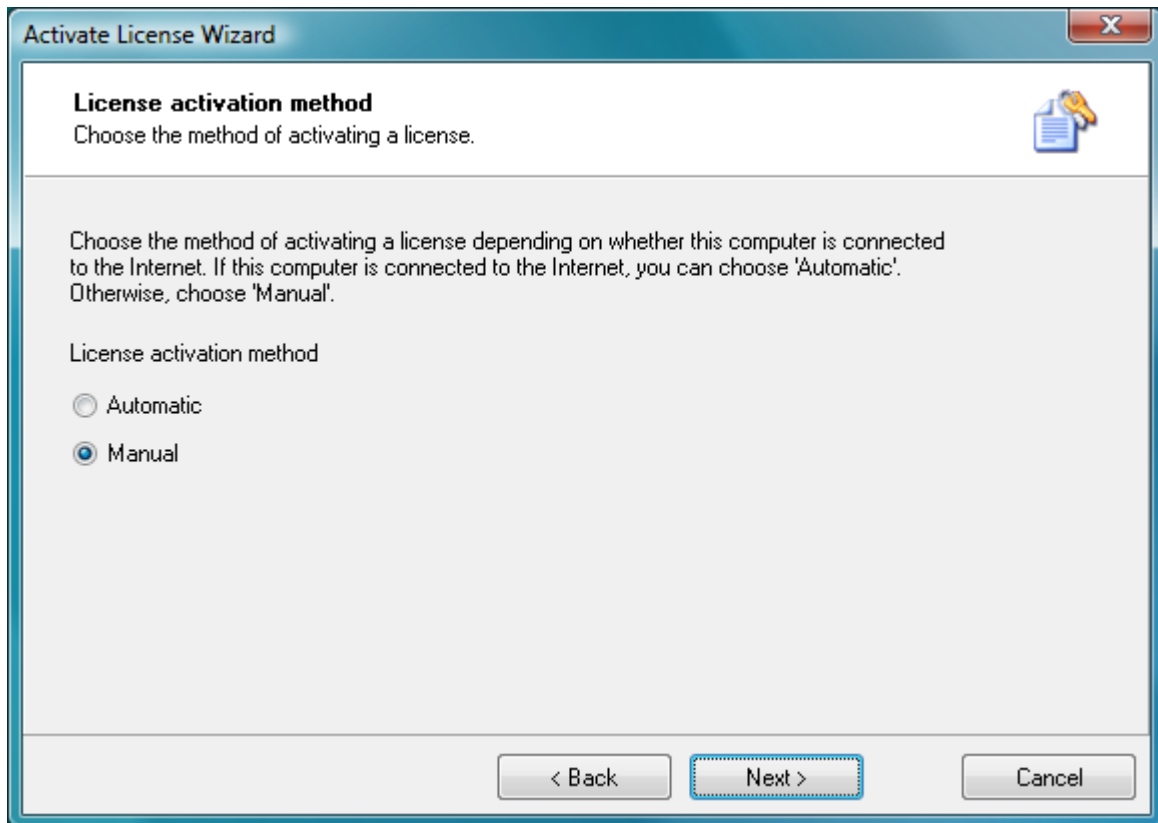
< Back Next > Cancel

Enter Serial number

Step 5:

Select *Automatic* activation method and finish the wizard. Check your licence in the *Step 10*.

If you can't use automatic method (e.g. computer is not connected to the Internet), choose the *Manual* activation method and click the **Next** button.



License activation method

Step 8:

Send an e-mail message to the address sales@reliance.cz. The message must include the following information:

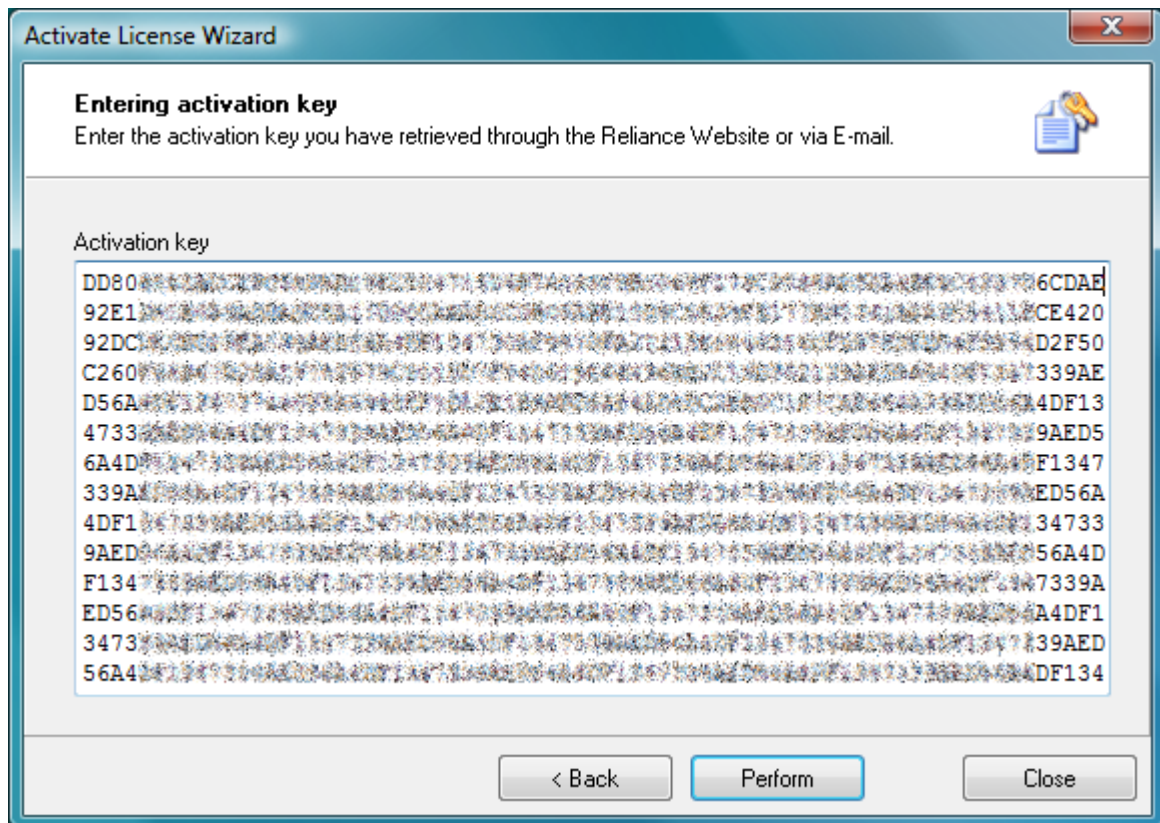
- 16-digit serial number (entered in *step 4*)
- registration key (generated by the *Activate License Wizard*)

The activation key will be sent to your e-mail address by the next working day at the latest.

Note: This step does not have to be performed on the computer where **Reliance 4** will be operating.

Step 9:

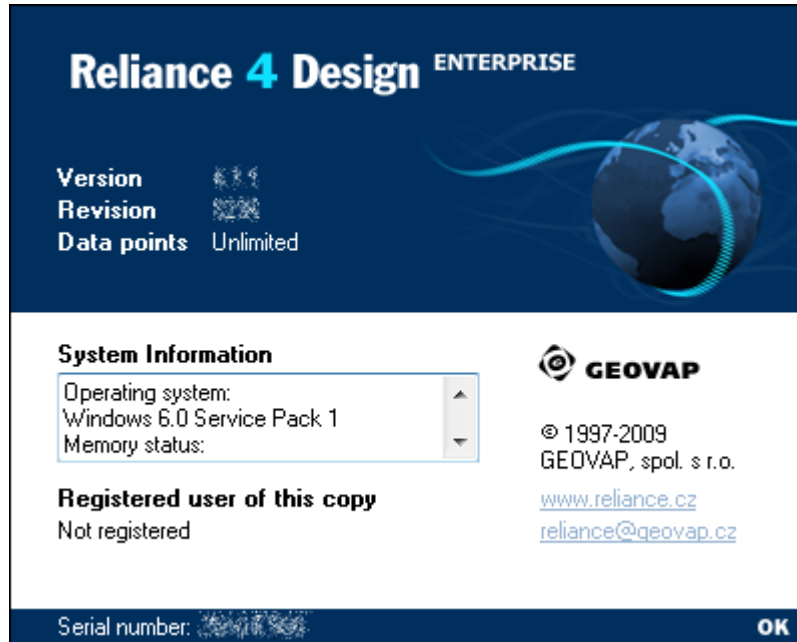
Paste the activation key into the respective edit box of the *Activate License Wizard* and click the **Perform** button to complete the activation procedure.



Entered activation key

Step 10:

Check if the license for the respective module has been activated (e.g. by choosing the *About* command in the *Help* menu).

**Checking the licence**

5 Time limited license

For testing purposes we also provide a time limited license. This license expires on a specified date. The license can be stored either in a SW key or in a special HW key (this key contains an integrated timer). An information about the expiration date is displayed once a day.

Steps to activate the time limited license are similar to the activation of a standard SW license and are described in the previous text.

6 Additional information

For more information on licensing *Reliance 4*, please refer to: <http://www.reliance.cz/en/products/reliance4/licensing-of-reliance4>.

If you have any questions, please contact us via e-mail at support@reliance.cz.